

SOCCER AT SPIRITRIDGE ELEMENTARY

**POWERED BY NOWLAND
PREMIER SOCCER
ACADEMY AND SKLZ
PERFORMANCE EQUIPMENT**



JOIN YOUR FRIENDS ON THE FIELD FOR A FUN AND FASTPACED AFTER SCHOOL SOCCER PROGRAM WITH NPSA! OUR EXPERIENCED AND LICENSED COACHING STAFF WILL GUIDE YOUR STUDENT THROUGH A BASIC SKILL-BASED LESSON WITH PLENTY OF TIME FOR GAMES AND SCRIMMAGE!

DAYS/DATES: TUESDAYS

TIMES: 3:40-4:40 PM

LOCATION: SPIRITRIDGE ATHLETIC FIELD

COST: \$129

INFORMATION AND REGISTRATION:

WWW.NPSATITANS.COM/BSDAFTERSCHOOLPROGRAM



WWW.NPSATITANS.COM

**ALL SKILL LEVELS
WELCOME!**

**LIMITED SPOTS
AVAILABLE -
REGISTER NOW!**

**TUESDAYS
3:40-4:40 PM**

**PROFESSIONAL
COACHING
STAFF**

**FUN GAMES
WITH SKLZ
PERFORMANCE
EQUIPMENT**

SCHOOL BREAK FOOD ASSISTANCE

Breaktime-Mealtime™

If your child(ren) are enrolled in Head Start or qualify for the free and reduced price lunch program, you are eligible for Bellevue LifeSpring's Breaktime-Mealtime™ program. This program provides ready-to-prepare breakfast and lunch items during Winter, Mid-Winter, Spring and Summer Breaks.

Boxes of **free food** will be available for pickup at your youngest child's school before each school break. The pickup dates for **Winter Break** are **December 11-15**, for **Mid-Winter Break** are **February 12-16**, for **Spring Break** are **April 2-6**, and for **Summer Break** are **June 18-22**. If you sign up for the program, you will be responsible for picking up your box(es) at school during office hours.

If you are interested in taking part in the program, please complete this form to enroll all children in your family who attend Bellevue public schools. Return the form to the **school office, Family Connections Center or Pre-K program** attended by the youngest child in your family by: **October 2, 2017**.

This service is provided by Bellevue LifeSpring and is not a Bellevue School District program.

*Please complete **ONE** application per family*

Return the form below to the school office, Family Connections Center, or pre-K program of your youngest child.

Parent's first and last name: _____

Home address: _____ Apt #: _____ Zip: _____

Phone number(s): _____ Email: _____

Number of children in family attending Bellevue public schools: _____

Youngest School-Age Child (including Pre-K):

Student Name: _____ Student ID: _____

School Name: _____ Grade: _____

Are you homeless? YES NO Race: _____

Language Spoken at Home: _____ Free and Reduced Lunch Program? FREE REDUCED NO

Family Size: _____ Monthly Net Income: \$ _____ Monthly Rent/Mortgage: \$ _____

Family Composition: Couple with Children Single Parent with Children Kinship Provider with Children



*Nurturing Global Citizenship
Through Language
and Culture*

sponge

At Sponge, we see language as a **passport to global citizenship**. Students learn to see the world through a different lens while acquiring language skills and the confidence to use them.

Young learners are especially **primed for language learning** - research shows that students are 70% more likely to gain fluency when they begin in elementary school or younger. **Sponge classes are immersion based, and taught by native speaker using games, art, songs, stories, drama and movement to help children build language skills!** We believe the best way to learn a language is to be immersed in it and having fun!

**Hola! Ni Hao!
Bonjour! Guten Tag!**

SPONGE PROGRAM FEATURES:

Online Portal

Free access to our interactive online portal to practice language skills at home!



Spanish at Spiritridge Elementary

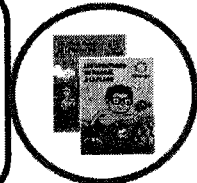
Monday 7:50-8:50am,
10/2(Mon)-5/21(Mon) \$125X4

Tuesday 7:50-8:50am
10/3(Tue)-5/22(Tue) \$145X4

To register, visit
<https://spongeschool.com/sign-up>

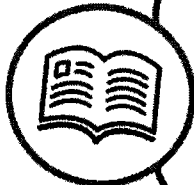
Unit Stories

Each Sponge unit brings together the language learned into context through a fun story.



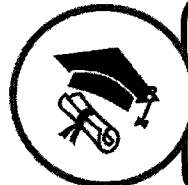
Course Activity Book

Each student will receive a Course Activity Book to help practice language in class as well as at home.



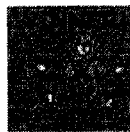
Final Projects

Each Sponge unit incorporates a final project, based on a fun cultural theme, to reinforce language learned in the unit.



The Bellevue School District does not sponsor nor endorse this event and/or information, nor does the district assume responsibility for it. In consideration of the privilege to distribute materials, the Bellevue School District will be held harmless from any cause of action filed in any court or administrative tribunal arising out of the distribution of these materials, including costs, attorney's fees and judgments or awards.

www.spongeschool.com | info@spongeschool.com | (425) 274-5188.



KELSEY CREEK FARM FAIR

FUN FOR
ALL AGES
BELLEVUE, WA



Saturday, October 7, 11 a.m.–4 p.m.

Free activities:

- Entertainment: Cowboy Buck and Elizabeth
- Visiting Mascots: Mr. Mouse and the Kelsey Creek Bee
- Hands-on pioneer activities by Eastside Heritage
- Kelsey Creek Critter 4-H
- Children's activities and Fun Farm Photo
- Scarecrow Maze
- Admission, parking and shuttle service

Activities with nominal fees:

- Pumpkin Patch and Decorating
- Scarecrow Creations
- Seattle Pony Party
- Face Painting
- Tractor-pulled Wagon Rides by Northwest Vintage Tractor Club
- Stella Fiore Wood Fired Pizza
- Taco La Flaca
- Pioneer Popcorn
- Cascade Natural Honey display and sales

Sorry, no ATM on site. Pets not allowed in the barnyard area.

Shuttle service available from Bannerwood Sports Park, 1790 Richards Road and Wilburton Park & Ride, 720 114th Ave. SE
directions on reverse side

For more information, 425-452-7688
KelseyCreekFarm@bellevuewa.gov



Wheelchair accessible. American Sign Language (ASL) or other interpretation available upon request. Assisted listening devices available. Call at least 48 hours in advance for any request. 425-452-6884 or Relay Service 711.



Bellevue Parks & Community Services